

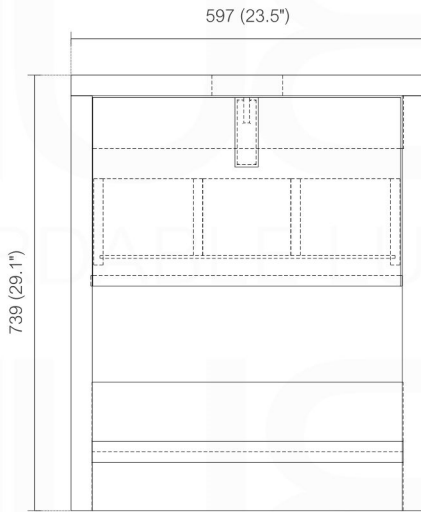
LEVI L600

Sink: L600SINK

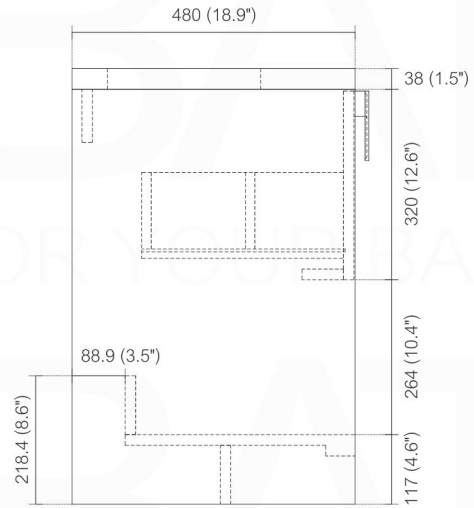
Dimensions:	width	depth	height
inches	23.6"	18.9"	33.8"
mm	599	480	859

NOTE: DIMENSIONS AND TECHNICAL DETAILS ARE SUBJECT TO CHANGE WITHOUT NOTICE

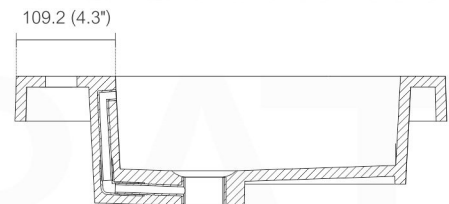
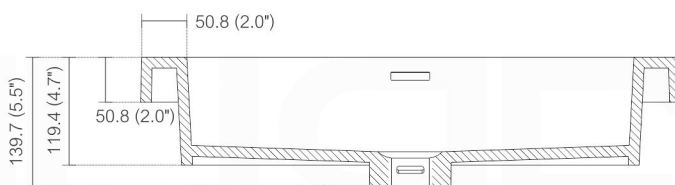
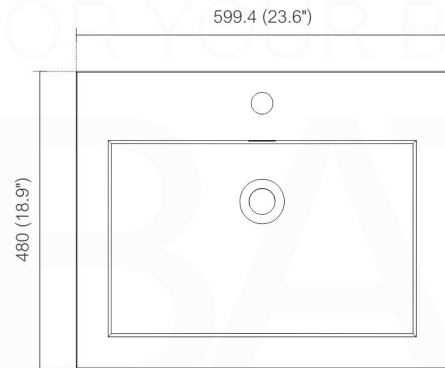
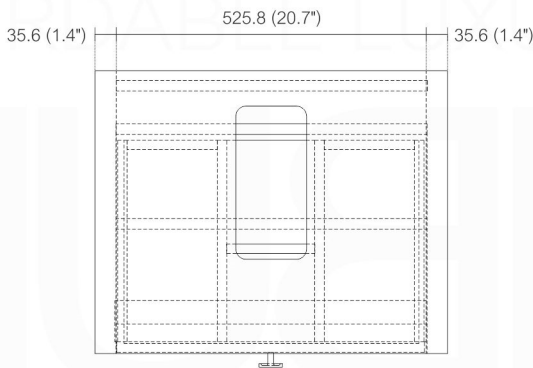
. FRONT ELEVATION



. SIDE ELEVATION

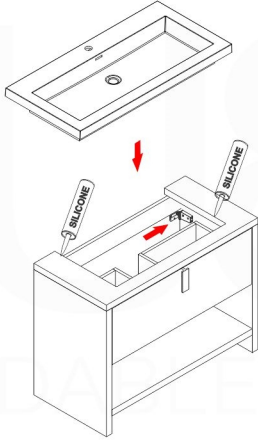


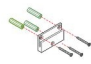
. TOP ELEVATION



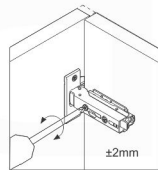
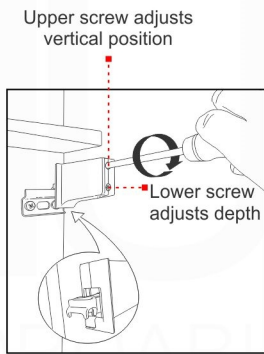
How to Install a Levi Vanity | Remove / Install Drawers | Adjust Doors

INSTALLATION GUIDE

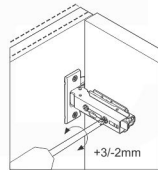


1. Determine your vanity placement and mark the area on the wall where it will be installed.
2. Locate and mark the location of the studs to which you will fasten your vanity. You can find studs by listening for a solid sound as you knock on the wall or by using a stud finder.
3. If your vanity cabinet has a solid back, mark and drill holes to accommodate drain pipes and supply pipes as necessary.
4. Mark the location of each of the wall mounting plates ensuring that they are positioned inside the sidewalls of the vanity unit. 
5. Place the vanity in the installation location. Verify that the vanity cabinet is level. If the vanity is not level, use vanity feet (if included) or wooden shims to adjust as necessary.
6. Install the integral sink/vanity top by applying a dot of silicone sealant on the corners of the vanity. Position the vanity top onto the vanity and press firmly into place. Wipe away any excess sealant with a damp cloth.

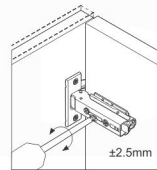
Note: We recommend consulting professional help if you are unfamiliar with installing bathroom vanities and/or plumbing.



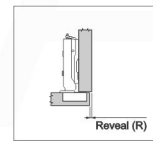
Side adjustment



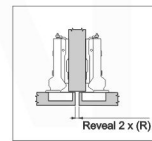
Depth adjustment via worm gear



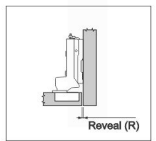
Depth adjustment via worm gear



Full Overlay/
Overlay Door



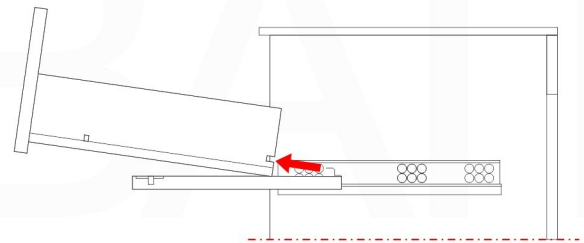
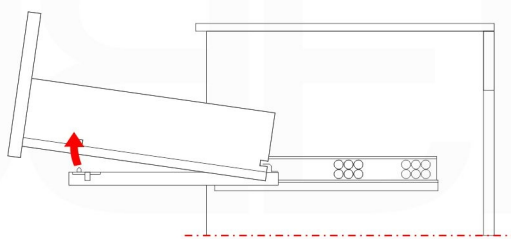
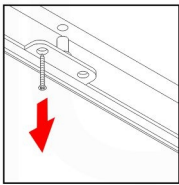
Half Overlay Door



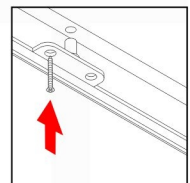
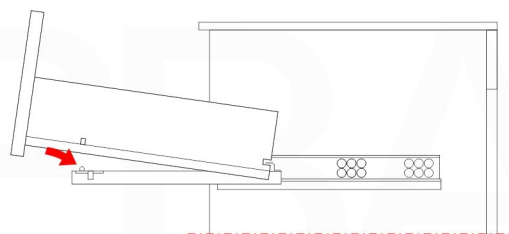
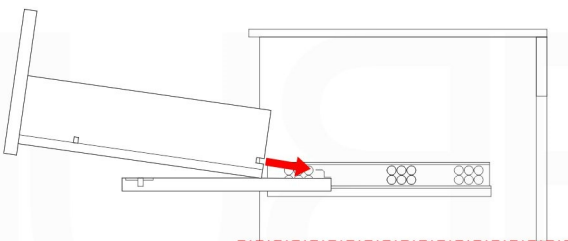
Inset Door

REMOVE DRAWERS

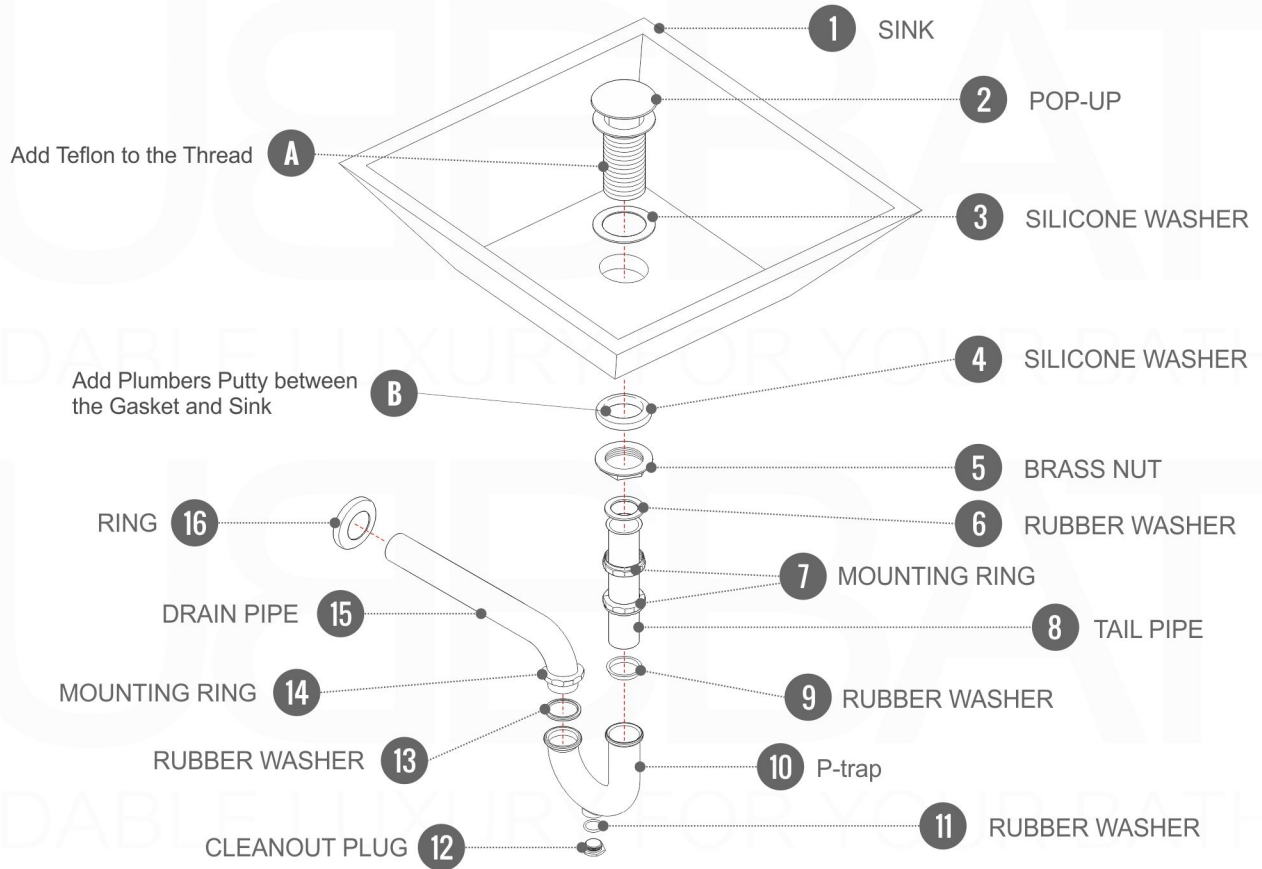
(Locate the screws on the bottom of the drawer)



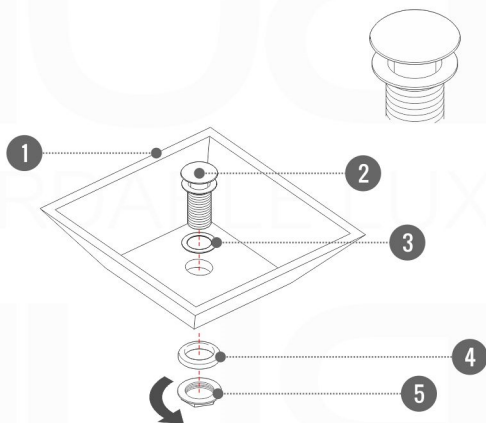
INSTALL DRAWERS



Pop-Up / P-trap Installation Instructions INSTALLATION GUIDE



FOR SINKS WITHOUT OVERFLOW
#SKU: P101N / P102N



OR

FOR SINKS WITHOUT OVERFLOW
#SKU: P101 / P102

